

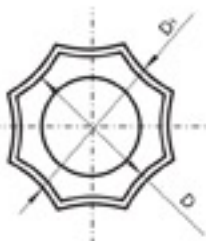
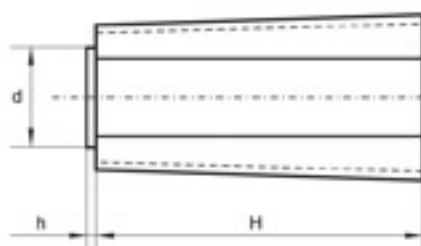
Forging Feedstock



INGOTS



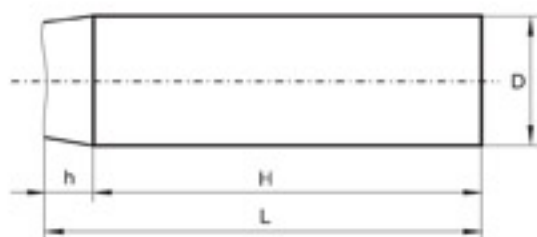
Polygonal



№	Weight, tons			Dimensions, inches				
	Ingot	Body	Head	Body			Head	
				D	D ₁	H	d	h
1	10.69	9.56	1.13	32	35	75 1/2	32	10
2	12.90	11.43	1.46	34	37	79 1/2	33	12



Round



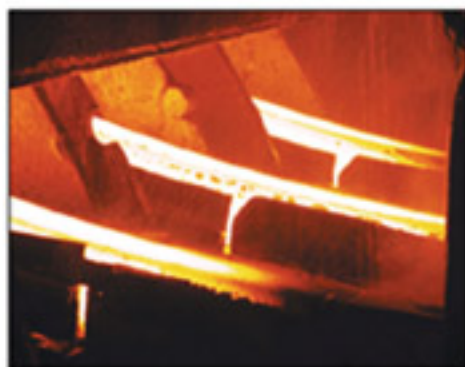
№	Weight, tons		Dimensions, inches			
	Gross Weight	Net Weight	D	L	H	h
1	35.4	32.8	47 1/4	159 1/2	147 2/3	11 3/4
2	35.2	32.2	47 1/4	139 3/4	128	11 3/4
3	30.0	28.4	39 1/2	181	168 1/2	12 1/2
4	21.1	20.6	31 1/2	187 2/3	181	6 2/3
5	12.1	11.6	23 1/2	187 1/3	182 2/3	4 2/3
6	8.5	8.3	19 3/4	191	186 1/4	4 2/3

CONTINUOUSLY CAST



Billets

Section : 4" - 9 1/2"
Length : 236" - 472"



Blooms

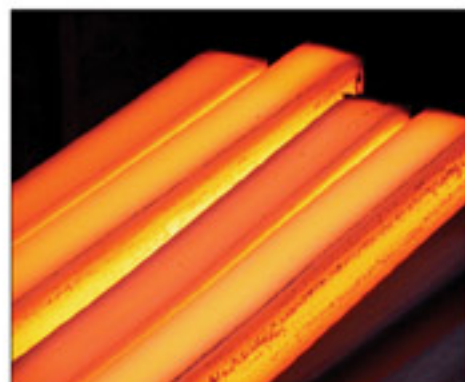
Section : 9 1/2" - 9 1/2"
 : 9 7/8" - 11 3/4"
 : 11 3/4" - 11 3/4"
 : 11 3/4" - 15 3/4"
 : 14 1/6" - 14 1/6"
Length : 98 1/2" - 216 1/2"



HOT ROLLED

Squares

Section : 2" - 14"
Length : 138" - 464"



Rounds

Diameter : 3/4" - 13 3/4"
Length : 138" - 464"



FORGED

Squares

Cross section : 5 1/2" - 39 3/8"
Length : max 256"
Weight : 0,9 - 55,1 tons



Rounds

Diameter : 7" - 63"
Length : max 433"
Weight : 0,9 - 66,1 tons



STEEL GRADES

Standarts

- **Carbon**

A105, A350LF2, 1040, 1060 and others

- **Alloyed**

4130, 4140, 4340, 8620 and others

- **Stainless**

304, 316L, 410, 420 and others

- **Tool**

H13, D-2, O-1, A-2 and others

- **High Speed**

M2, M42 and others



LOCATIONS



PlatesAhead Inc. P.O. Box 12361, Birmingham, AL 35202, USA Tel / Fax : 1 - 800 896 05 16
eMail : buy@platesahead.com Skype.com name: PlatesAhead www.platesahead.com

Brent

24/7 : 205 317 45 36



Mike

24/7 : 011 44 7785 311 646



Jenny

24/7 : 011 44 7768 856 600



Oxana

24/7 : 011 44 7733 103 648

